



CPC Express

September 26, 2017



OCTOBER 1, 2017 10:00 a.m.

Psalm 78:1-4, 12-16

*God made streams flow from rocks,
giving water to the people.*

Gospel 21: 23-32

*Leaders question Jesus' authority;
he answers them with a parable.*

For more information:

https://en.wikipedia.org/wiki/World_Communion_Sunday



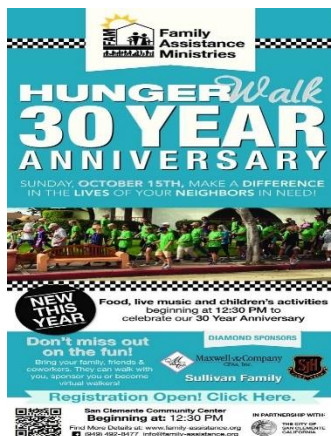
**Preschool / Kindergarten CONNECTION
9th Annual Back-to-School BBQ & Halloween Carnival**

**Friday, October 6 5:00 – 6:30 p.m.
Church Lawn and Preschool**

Join the fun, help with the carnival games,
hand out candy for the trick or treaters,
and meet families who attend our school.
(Contact Terri Beck at Preschool office to help.)

For more information

<http://www.sjcpres.org/preSchool/program.php>



FAMILY ASSISTANCE MINISTRY

30th Anniversary Hunger Walk

Walk (and/or sponsor a walker)

Sunday, October 15

GATHERING STARTS AT 12:30 p.m.

For more information <https://www.family-assistance.org>

WorshipLearnServe



Tim Powers passed from life to Life on September 23, 2017.

A Witness to the Resurrection worship service will be on **Sunday, October 8, 2017 at 2:00 p.m.** in the Sanctuary.

A memorial fund in memory of Tim has been established at Community Presbyterian Church, San Juan Capistrano.

Flick Fellowship:



Flick Fellowship October date has been moved to **Friday, September 29.**

Please go and see ***All Saints*** at your convenience and then join us for a **Potluck at 6:00 p.m.** in the Fellowship Hall.

9th Annual Back to School BBQ & Halloween Carnival – Friday, October 6:

Preschool / Kindergarten CONNECTION

9th Annual Back-to-School BBQ & Halloween Carnival

Friday, October 6

5:00 – 6:30 p.m.

Church Lawn and Preschool



Church members are invited again this year to join the fun, help with the carnival games, hand out candy for the “trick or treaters,” and meet families who attend our school.

Last October TWENTY-ONE of you attended, and preschool families noticed!

This event presents a wonderful opportunity for our church to make CONNECTIONS with school families. Our hope is that relationships will develop between church and school families.

Please say **YES** to being Christ’s voice, hands, and heart to our school families.

Sign up with Terri Beck on the patio TODAY!

Deacons Sunday:

Communion Sunday, **October 1**, is a time for remembering the Deacons to support ongoing mission and care ministry.

New Bricks for Rose Garden:

Help us make our rose garden even more beautiful. Many of the current plaques for the roses have faded and are deteriorating. Please assist the Deacons in making more permanent and uniform plaques by purchasing engraved bricks going from the old bricks to the new bricks:



OLD



NEW

How you can help. Adopt a brick or two, or three, or more. New brick plaques range in price from \$23.60 to \$41.20, depending on amount of text needed. If you could help with this project, please make a check payable to CPC with Rose Garden Renovation in the memo line and send to:

Community Presbyterian Church
32202 Del Obispo Street
San Juan Capistrano, CA 92675

Your help would be most appreciated.

Homework Club Has Begun:



Began on Thursday, September 21

We are tutoring students in 3rd to 5th grade at Kinoshita School from 2:00 p.m. to 3:30 p.m.

Volunteers are needed!

Please contact Leanne Strommen at outreach@sjcpres.org to volunteer.

Family Assistance Ministries (FAM) Hunger Walk / Sunday, October 15:



HUNGER *Walk* 30 YEAR ANNIVERSARY

SUNDAY, OCTOBER 15TH, MAKE A DIFFERENCE
IN THE LIVES OF YOUR NEIGHBORS IN NEED!



NEW THIS YEAR Food, live music and children's activities beginning at 12:30 PM to celebrate our 30 Year Anniversary

Don't miss out on the fun!
Bring your family, friends & coworkers. They can walk with you, sponsor you or become virtual walkers!

DIAMOND SPONSORS

 Maxwell & Company
CPAs, Inc.

 Sullivan Family



Registration Open! Click Here.



San Clemente Community Center
Beginning at: 12:30 PM

Find More Details at: www.family-assistance.org
f (949) 492-8477 info@family-assistance.org

IN PARTNERSHIP WITH:
 THE CITY OF
SAN CLEMENTE
CALIFORNIA

See the attached flyer for details.

FAM Satellite Program – Food Distribution Every Wednesday:



The pantry will be open in the **Youth Center, Bldg. 2**
11:00 a.m. and continue until 1:00 p.m.

To volunteer contact Leanne Strommen
at outreach@sjcpres.org.

Pastor's Office Hours:

Mondays from 10:00 a.m. to 12:00 p.m. Thursdays from 10:00 a.m. to 12:00 p.m. *In addition, other times are available for appointments to meet individual needs.*



Pat Bathgate
Marilyn Johnson
and Family

Nancy Powers
and Family
Steve
Schenkenberger

Our Preschool
Our Kindergarten
Our Youth



Church Calendar

Wednesday, September 27	10:30 a.m. 11:00 a.m.	Staff Meeting, Office FAM Satellite Food Bank, Youth Center, Bldg. 2
Thursday, September 28	10:30 a.m. 7:30 p.m.	Stewardship Meeting, Meeting Room Chancel Choir Rehearsal, Music Room
Friday, September 29	6:00 p.m.	Flick Fellowship, Fellowship Hall
Saturday, September 30		
Sunday, October 1	8:00 a.m. 10:00 a.m.	Worship Band Rehearsal, Sanctuary Worship, Sanctuary
Monday, October 2		
Tuesday, October 3	3:00 p.m.	Worship Meeting, Office

Ministers
Pastor
Pastor Emeritus
Parish Associate
Worship Band Leader
Chancel Choir Director
Organist
Preschool/Kindergarten Director
Children's Ministries Director
Manager of Accounting
Administrative Assistant
Liturgist: Sunday, October 1
Ushers: Sunday, October 1
Golf Cart Driver: Sunday, October 1
Sound Technician

All the Congregation
Michael Vaughn
Robert Schwenck
Leanne Strommen
Megan Theodorou
Will Reeder
Judy Richter
Terri Beck
Debbie Reeder
Suzanne Stamos
Jean McCormick
Chris Kirkland
Nan Fryer and Wendy Jenkins
Kristin Tetherton
Weston Lewis

Community Presbyterian Church is a congregation that
Worships Christ
Learns to live as disciples
Serves the wider community in building the Kingdom

Jean McCormick,
Administrative Assistant
Community Presbyterian Church
32202 Del Obispo Street
San Juan Capistrano, CA 92675
office@sjcpres.org
949.493.1502

For more announcements and information see our website at www.sjcpres.org

Contents of this publication are not for commercial use.