



CPC Express

October 10, 2017

Proper Attire
Must Be Worn
Beyond This Point

October 15

19th Sunday after Pentecost

Psalm 23

*The Lord prepares a table for me
in the presence of my enemies.*

Matthew 22:1–14

*The kingdom is like a banquet;
many are called, few are chosen.*

The Matthean parable for this week is wedding guest without a worthy wardrobe which results in (A: not only) being cast out of the party into (B: also) outer darkness where there is (C: additionally) weeping and gnashing of teeth.

Clearly, just A would have been horrid. What is the “more” of this story? *More* is at stake than what to wear or what not to wear.

What “more” is necessary? What “more” is demanded? What “more” is expected? What “more” is required? What do we assume that “more” to be? How do we determine what that “more” looks like? How do we define what the “more” includes?

Maybe it needs to be *more* obvious to us, the text isn't interested in our questions that attempt to understand -- and avoid -- the guest's fate. Rather, the text simply states a truth -- a seat in the Kingdom of Heaven will require something more than merely accepting an invitation to discipleship.

A worshipper exiting last Sunday's service asked me if there would be anymore parables preached on in the coming weeks. I said merely, “yes.” By Tuesday, I also wished I had added, “Life is a parable. Let us be life-long learners.”

See you this Sunday as we consider this week's lesson.

Mike

WorshipLearnServe

Ballroom Bash –Second Friday each month in Fellowship Hall:



Friday, October 13:

Doors open 7:15 p.m. **Lesson ~7:35**

8:20 p.m. - 10:30 p.m. dancing to your favorite recorded music:

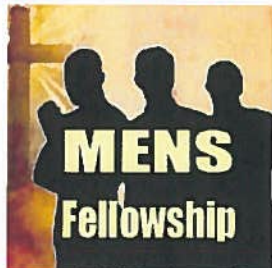
Foxtrot, Swing, Tango, Waltz, Salsa, Samba, Cha-Cha
Singles and Couples (18 and over), young and young-at-heart.

Complimentary soft drinks and delicious refreshments,
air-conditioned, non-smoking, and non-alcoholic.

CPC, 32202 Del Obispo, SJC, CA 92675

Website: www.ballroombash.com / Admission \$10.00

Men's Fellowship - All Men Invited:



The Men's Fellowship meets on the **second and fourth Saturday of each month on Sue's Porch at 10:00 a.m.**

The next meeting this month we will be on: **Saturday, October 14.**
We look forward to seeing you!

FAM Hunger Walk - Join us this Sunday, October 15:

The flyer features a blue and white color scheme with a checkered border. At the top, it says 'FAM Family Assistance Ministries'. The main title is 'HUNGER Walk 30 YEAR ANNIVERSARY'. Below that, it reads 'SUNDAY, OCTOBER 15TH. MAKE A DIFFERENCE IN THE LIVES OF YOUR NEIGHBORS IN NEED!'. A photograph shows a group of people walking. A circular badge says 'NEW THIS YEAR'. Text below the photo says 'Food, live music and children's activities beginning at 12:30 PM to celebrate our 30 Year Anniversary'. At the bottom, it says 'Don't miss out on the fun!', 'Registration Open! Click Here.', and 'Sullivan Family' with a logo. A QR code is in the bottom left, and contact information for San Clemente Community Center is at the bottom.

FAMILY ASSISTANCE MINISTRY
30th Anniversary Hunger Walk
Walk (and/or sponsor a walker)
Sunday, October 15
GATHERING STARTS AT 12:30 p.m.

For more information visit:
<https://www.family-assistance.org>
or see the attached flyer for additional details.

CPC Ladies' Lunch / Third Tuesday Lunch:



Here are the details for our next lunch on the third Tuesday of the month.

Date: **Tuesday, October 17**

Time: 11:30 a.m.

Place: **Cedar Creek Inn in San Juan Capistrano on the Patio**

Hope you can join us this month. Please RSVP to Fran Eagan by Sunday, October 15 if you plan to attend.

Volunteer Opportunity – Preschool/Kindergarten:



The preschool / kindergarten staff appreciate the church members who volunteer in our classrooms, help at our special events, and maintain our yards and classrooms.

We could sure use your help at these upcoming events. Please contact me at terribeck@sjcpres.org if you can lend a hand.

Thank you so much!

Vision Screening—one volunteer to sit in the room during the screenings and one volunteer to escort children to and from their classrooms. Begins at 9:00 a.m.

- Monday, November 6 _____
- Tuesday, November 7 _____
- Wednesday, November 8 _____
- Thursday, November 9 _____

Thanksgiving Feasts—three or four volunteers each day to help Terri and Jeannie place the food onto plates for each child and teacher (approximately 122 plates/day). Beginning at 10:00 a.m.

Thursday, Nov. 16 _____
Friday, Nov. 17 _____

Chancy & Bruce Kindergarten Readiness Screening—two volunteers each day to help escort children to and from their classrooms. Begins at 9:30 a.m.

Thursday, January 18 _____
Friday, January 19 _____



RUBY'S DINER RESTAURANT

31781 Camino Capistrano,
San Juan Capistrano
(949) 496-RUBY

JOIN US TO CELEBRATE OUR FUNDRAISER AT
RUBY'S DINER & Sky Ranch Saloon

In San Juan Capistrano

20% OFF ALL Food & Beverage Sales

(With This Flyer Presented) Will Be Donated To

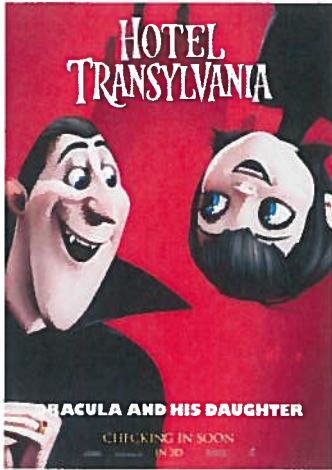
**Community Presbyterian Preschool &
Kindergarten**

Thursday, October 19TH, FROM 8AM – 9:00PM

**DON'T FORGET TO BRING THIS FLYER
WITH YOU!**

**FLYERS MUST BE PASSED OUT PRIOR TO YOUR FUNDRAISER AND
MAY NOT BE PASSED OUT AT THE RESTAURANT DURING THE EVENT.
OFFER IS VALID ON TO-GO ORDERS! (20% Offer Excludes Alcohol)**

Movie on the Lawn:



FRIDAY, OCTOBER 20

6:00 p.m.

Pack a picnic dinner, bring chairs and blankets, invite friends and neighbors, and get into the Halloween spirit with ***Hotel Transylvania.***

FAM Satellite Program – Food Distribution Every Wednesday:



The pantry will be open in the **Youth Center, Bldg. 2** 11:00 a.m. and continue until 1:00 p.m.

To volunteer contact Leanne Strommen at outreach@sjcpres.org.

Homework Club:



Volunteers needed!

We are tutoring students in 3rd to 5th grade at ***Kinoshita School*** from 2:00 p.m. to 3:30 p.m.

To volunteer contact Leanne Strommen at outreach@sjcpres.org.

New Bricks for Rose Garden:

Help us make our rose garden even more beautiful. Many of the current plaques for the roses have faded and are deteriorating.

Please assist the Deacons in making more permanent and uniform plaques by purchasing engraved bricks going from the old bricks to the new bricks:



OLD



NEW

How you can help? Adopt a brick or two, or three, or more. New brick plaques range in price from \$23.60 to \$41.20, depending on amount of text needed. If you could help with this project, please make a check payable to CPC with Rose Garden Renovation in the memo line and send to:

Community Presbyterian Church
32202 Del Obispo Street
San Juan Capistrano, CA 92675

Your help would be most appreciated.

Pastor's Office Hours:

Mondays from 10:00 a.m. to 12:00 p.m. Thursdays from 10:00 a.m. to 12:00 p.m. *In addition, other times are available for appointments to meet individual needs.*



Pat Bathgate
Marilyn Johnson
and Family

Nancy Powers
and Family
Steve
Schenkenberger

Our Preschool
Our Kindergarten
Our Youth



Church Calendar

Wednesday, October 11	10:00 a.m.	Lydia Circle, Offsite
	10:30 a.m.	Staff Meeting, Office
	11:00 a.m.	FAM Satellite Food Bank, Youth Center, Bldg. 2
Thursday, October 12	9:30 a.m.	Martha's Circle, Fellowship Hall
	11:15 a.m.	PWCT, Sue's Porch
	7:30 p.m.	Chancel Choir Rehearsal, Music Room
Friday, October 13	9:00 a.m.	Finance Meeting, Office
	7:15 p.m.	Ballroom Bash, Fellowship Hall
Saturday, October 14	10:00 a.m.	Men's Fellowship, Sue's Porch
Sunday, October 15	8:00 a.m.	Worship Band Rehearsal, Sanctuary
	10:00 a.m.	Worship, Sanctuary
	12:30 p.m.	FAM Hunger Walk, Offsite
Monday, October 16	6:00 p.m.	Stated Meeting of Session, Meeting Room
Tuesday, October 17	11:30 a.m.	Ladies' Lunch, Offsite
	6:30 p.m.	Deacons, Meeting Room

Ministers
 Pastor
 Pastor Emeritus
 Parish Associate
 Worship Band Leader
 Chancel Choir Director
 Organist
 Preschool/Kindergarten Director
 Children's Ministries Director
 Manager of Accounting
 Administrative Assistant
 Sound Technician
Liturgist: Sunday, October 15
Ushers: Sunday, October 15
Golf Cart Driver: Sunday, October 15

All the Congregation
 Michael Vaughn
 Robert Schwenck
 Leanne Strommen
 Megan Theodorou
 Will Reeder
 Judy Richter
 Terri Beck
 Debbie Reeder
 Suzanne Stamos
 Jean McCormick
 Weston Lewis
Vera Ferguson
The Eagans
Michelle Lincoln

Community Presbyterian Church is a congregation that
Worships Christ
Learns to live as disciples
Serves the wider community in building the Kingdom

Jean McCormick,
 Administrative Assistant
 Community Presbyterian Church
 32202 Del Obispo Street
 San Juan Capistrano, CA 92675
office@sjcpres.org
 949.493.1502

For more announcements and information see our website at www.sjcpres.org
Contents of this publication are not for commercial use.

Family Assistance Ministries (FAM) Hunger Walk / Sunday, October 15:



HUNGER *Walk* 30 YEAR ANNIVERSARY

SUNDAY, OCTOBER 15TH, MAKE A DIFFERENCE
IN THE LIVES OF YOUR NEIGHBORS IN NEED!



**NEW
THIS
YEAR**

Food, live music and children's activities
beginning at 12:30 PM to
celebrate our 30 Year Anniversary

**Don't miss out
on the fun!**

Bring your family, friends &
coworkers. They can walk with
you, sponsor you or become
virtual walkers!

DIAMOND SPONSORS



Maxwell & Company
CFAs, Inc.

Sullivan Family



Registration Open! Click Here.



San Clemente Community Center
Beginning at: 12:30 PM

Find More Details at: www.family-assistance.org
f (949) 492-8477 info@family-assistance.org

IN PARTNERSHIP WITH:



THE CITY OF
SAN CLEMENTE
CALIFORNIA